

E U R O S P I T A L
D I A G N O S T I C



PRODUCT CATALOGUE 2023

www.eurospital.com

Eurospital
DIAGNOSTIC

Gastroenterology - ECL

Celiac Disease - ECD

Genetic Testing - EGT

Molecular Biology - EMB

Infectiology - EIL

Autoimmunity - EAL



**FOUNDED IN TRIESTE, ITALY, IN 1948,
EUROSPITAL IS AN ITALIAN FAMILY
COMPANY THAT HAS KEPT OVER TIME
ITS ORIGINAL FOOTPRINT.**

EUROSPITAL CONTINUES TO WATCH
TO THE FUTURE AND TO SEARCH FOR
THOSE "INNOVATIONS TO LIVE BETTER"
BUILT INSIDE THE EXPRESSION
OF CORPORATE ACTION'S PHILOSOPHY.

The Diagnostic Division, since its establishment, has always operated in the unexpressed needs, exploring areas, niches, in which requests start to arise and where there are still no solutions, and goes finding them through collaborations with leading clinicians and opinion leaders of the specific sector of reference.

Innovation and research for a common growth

The Diagnostic Division has always been the reference partner for gastroenterologists, paediatricians, microbiologists, managers of analytical and clinical laboratories to improve the diagnostic effectiveness in their sectors of activity.

The Diagnostics Division operates with the mission of integrating its own experiences in immunology, gastroenterology and biotechnology, together with insights from a network of international clinicians, laboratory technicians as well as experts from specific sectors, to transform every stimulus into ideas, products and solutions for its customers' needs.

**The commercial, manufacturing and logistic site is located in Trieste, Italy.
Where Eurospital was originally founded.**



ECL EUROSPIRAL
CALPROTECTIN
PRODUCT LINE

Gastroenterology

***FROM THE PIONEERS OF CALPROTECTIN DETERMINATION,
A COMPLETE LINE OF DIAGNOSTIC PRODUCTS FOR THE
IDENTIFICATION OF GASTROINTESTINAL DISEASES***

Eurospiral Calprotectin Product Line (ECL) is an ecosystem of IVD products designed for a comprehensive diagnosis of gastrointestinal diseases through the quantitative determination of different biological markers: calprotectin, pancreatic elastase, fecal occult blood (FOB), *Helicobacter pylori*.

Rapid lateral flow, ELISA and turbidimetric tests: products made with different technologies with the aim to meet any need of laboratory users. From a small number of tests up to a very high throughput, Eurospiral ECL product line can afford any workload.

Lateral flow			
Product name	Product description	Ref.	Size
CalFast XT	Lateral flow test for the quantitative detection of calprotectin in fecal samples. Measuring up to 1,005 µg/g. Fecal extraction devices and quality controls are included.	9191XT	20 tests
CalFast XT Quality control set	Additional lot-dependent quality controls for CalFast XT rapid test. Content: 3 vials of positive controls and 3 vials of negative controls. Each vial contains material for 2 controls.	9191XQ	1 set
CalFast NeXT	Third generation lateral flow test for the quantitative detection of calprotectin in fecal samples. Measuring up to 2,100 µg/g. Fecal extraction devices and quality controls are included.	9191NT	20 tests
CalFast NeXT Quality control set	Additional lot-dependent quality controls for CalFast NeXT rapid test. Content: 3 vials of positive controls and 3 vials of negative controls. Each vial contains material for 2 controls.	9191NQ	1 set
ElaFast	Lateral flow test for the quantitative detection of pancreatic elastase in fecal samples. Fecal extraction devices and quality controls are included.	9191EP	20 tests
CalFast Reader	Instrument for the quantitative reading of CalFast XT, CalFast NeXT and ElaFast rapid tests.	9190	1 instrument
IFX-Fast	Lateral flow test for the quantitative detection of Infliximab in serum and plasma.	9191TI	25 tests
ADM-Fast	Lateral flow test for the quantitative detection of Adalimumab in serum and plasma.	9190TA	25 tests
Eu-Fast Reader	Last generation instrument for the quantitative reading of CalFast XT, CalFast NeXT, ElaFast, IFX-Fast and ADM-Fast rapid tests.	9190NT	1 instrument
Helori Fast	Lateral flow test for the qualitative detection of <i>H. pylori</i> antigens in fecal samples.	9115	20 tests
Helori Urease	Rapid test for the detection of <i>H. pylori</i> urease activity on gastric biopsies.	1693	15 tests

Eu-Fast Reader

Eu-Fast Reader is the new all-in-one instrument for the quantitative reading of Eurospital rapid tests, characterized by an intuitive software interface and an integrated touchscreen display.

Eu-Fast Reader has been designed as an independent solution, ready to use. **Eu-Fast Reader** is equipped with an integrated external camera for a handy reading of QR codes. Last generation components allow a rapid and efficient assessment of the test cassette, reducing the test's analytical step to just a couple of seconds.



MADE IN ITALY

ELISA			
Product name	Product description	Ref.	Size
Calprest NG	ELISA test for the quantitative detection of calprotectin in fecal samples. Measuring up to 3,000 µg/g.	9069	96 tests
EasyCal	Ready to use disposable device for the pre-analytical processing of fecal samples for the extraction of biological markers. Compatible with CalFast XT, CalFast NeXT, ElaFast and Calprest NG.	9062	100 devices
Panel FE	ELISA test for the quantitative detection of pancreatic elastase in fecal samples.	9048	96 tests
Device Panel FE	Ready to use disposable device for the pre-analytical processing of fecal samples for the extraction of pancreatic elastase. Compatible with Panel FE.	9046	45 devices
Helori-CTX IgG	Semi-quantitative ELISA test for the determination of IgG antibodies against the cytotoxin associated protein (CagA) of <i>H. pylori</i> in human serum.	8723	96 tests
Turbidimetry			
Product name	Product description	Ref.	Size
Calprest Turbo	Immunoturbidimetric test for the quantitative detection of calprotectin in fecal samples. Implementable on any turbidimetric instrument.	9300	200 tests
Elaprest Turbo	Immunoturbidimetric test for the quantitative detection of pancreatic elastase in fecal samples. Implementable on any turbidimetric instrument.	9298	100 tests
EasyCal Turbo	Ready to use disposable device for the pre-analytical processing of fecal samples for the extraction of biological markers. Compatible with Calprest Turbo and Elaprest Turbo.	9302	100 devices
FOB-Test Turbo	Immunoturbidimetric test for the quantitative detection of human haemoglobin in fecal samples. Implementable on any turbidimetric instrument.	9297	100 tests
EasyCal FOB	Ready to use disposable device for the pre-analytical processing of fecal samples for the extraction of biological markers. Compatible with FOB-Test Turbo.	9293	100 devices
Helori Turbo	Immunoturbidimetric test for the quantitative detection of <i>H. pylori</i> in fecal samples. Implementable on any turbidimetric instrument.	9296	100 tests
EasyCal Helori	Ready to use disposable device for the pre-analytical processing of fecal samples for the extraction of <i>H. pylori</i> antigens. Compatible with Helori Turbo.	9294	100 devices
Eu-Turbo Analyzer	Turbidimetric analyzer for the quantitative analysis of Eurospital turbidimetric tests.	9194	1 instrument

Eu-Turbo Analyzer

Eu-Turbo Analyzer is the benchtop turbidimetric analyzer Eurospital has designed to create an independent station dedicated to the analysis of Eurospital turbidimetric tests for the quantitative determination of fecal markers like calprotectin, pancreatic elastase, fecal occult blood and *Helicobacter pylori* antigen. Analysis can be performed from the **EasyCal** tubes directly loaded into the **Eu-Turbo Analyzer**.



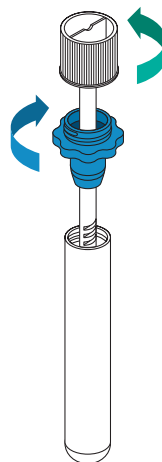
MADE IN ITALY

EasyCal® Family

Pre-analytical processing of fecal specimen

EasyCal is a well established brand for a family of **ready-to-use** disposable *in vitro* diagnostic devices for the pre-analytical processing of fecal specimens. Each EasyCal variant is associated with a specific analytical test and allows the **extraction** and **preservation** of one or more diagnostic markers. EasyCal devices consist of a test tube pre-filled with the extraction solution, a grey flexible rod and a blu funnel. The diagonal grooves on the lower part of the stick have been designed to collect a precise amount of feces, of **any consistency**, from the most liquid to the most solid. The funnel allows **reproducible processing** by retaining the excess stool specimen present on the stick, therefore allowing to extract the markers from a very precise amount of specimen.

The extraction protocol consists of just a few simple steps, providing users with an analyzable fecal extract in about 10 minutes. EasyCal tubes containing the fecal extract can be then loaded directly into the turbidimetric analytical instrument, without the need to further transfer the supernatant to a different tube.





ECD EUROSPIRAL
COELIAC DISEASE
PRODUCT LINE

Coeliac disease

THE MOST COMPREHENSIVE AND RELIABLE PANEL OF PRODUCTS FOR THE IN VITRO IDENTIFICATION AND MONITORING OF COELIAC PATIENTS

During its 30 years of presence in the IVD market of coeliac disease, Eurospiral has developed a complete portfolio of tests for the rapid identification and correct definition of coeliac patients.

From the Xeliac rapid test for a fast and easy screening of possible patients, to serology tests for the determination of antibodies against both human tissue transglutaminase (tTG) and gliadins, followed by the Antiendomysium (EMA) immunofluorescence test for the confirmation of the pathology, down to the genetic test for determining the risk of developing the disease, Eurospiral Coeliac Disease Product Line (ECD) is the only portfolio of IVD tests covering at 360° the coeliac definition.

Lateral flow

Product name	Product description	Ref.	Size
Xeliac Test Professional	Detection of IgA, IgG and IgM antibodies against human tTG on whole blood and serum. For professional use only.	9127	25 tests
Xeliac Test Pro	Detection of IgA and IgG antibodies against human tTG on whole blood. For self-testing.	Country specific	1 test

ELISA

Product name	Product description	Ref.	Size
Eu-tTG IgA	Detection of IgA antibodies against human tTG in human serum. The gold standard for the identification of the coeliac patient.	9105	96 tests
Eu-tTG IgG	Detection of IgG antibodies against human tTG in human serum. The gold standard for the identification of the coeliac patient.	9106	96 tests
α-GliapPep IgA	Detection of IgA antibodies against gliadin peptides in human serum. The best marker for suspected coeliac children < 2 years old.	9137	96 tests
α-GliapPep IgG	Detection of IgG antibodies against gliadin peptides in human serum. The best marker for suspected coeliac children < 2 years old.	9138	96 tests
α-Gliatest IgA	Detection of IgA antibodies against α -gliadin in human serum. The best marker for the monitoring of diet compliance.	9107	96 tests
α-Gliatest IgG	Detection of IgG antibodies against α -gliadin in human serum. The best marker for the monitoring of diet compliance.	9108	96 tests

IFA

Product name	Product description	Ref.	Size
Antiendomysium IgA (4 wells)	Detection of IgA anti-endomysial antibodies in serum on sections of the lower third of monkey esophagus. The gold standard confirmation test for suspected coeliac patients. 4 test wells per slide.	8734	96 tests
Antiendomysium IgA (8 wells)	Detection of IgA anti-endomysial antibodies in serum on sections of the lower third of monkey esophagus. The gold standard confirmation test for suspected coeliac patients. 8 test wells per slide.	8738	96 tests
Antiendomysium IgG	Detection of IgG anti-endomysial antibodies in serum on sections of the lower third of monkey esophagus. The gold standard confirmation test for suspected coeliac patients.	8721	48 tests
Antiendomysium Biopsy	Detection of IgA anti-endomysial antibodies from intestinal biopsy culture on lower third sections of monkey esophagus. The gold standard confirmation test for suspected coeliac patients.	8726	20 tests

Real time PCR

Product name	Product description	Ref.	Size
XeliGen XL	Molecular biology kit for the determination of genetic susceptibility to coeliac disease, from human DNA. Liquid reagents. Open platform.	9186	24 tests
XeliGen Lyo	Molecular biology kit for the determination of genetic susceptibility to coeliac disease, from human DNA. Lyophilized reagents. Open platform.	9186L	24 tests



EGT EUROSPIRAL
GENETIC TESTING
PRODUCT LINE

Genetic Testing

KNOWING GENETIC PREDISPOSITION TO HELP DISEASE PREVENTION

Eurospiral Genetic Testing Product Line (EGT), the portfolio of genetic tests in real time PCR to be run on any open platform real time thermal cycler.

Decades of experience in the identification and diagnosis of coeliac patients led Eurospiral to develop **XeliGen**, the only genetic test on the market able to identify the individuals bearing the alleles for coeliac disease and to stratify the risk to develop the pathology.

Since the HLA alleles responsible for coeliac disease are linked to those of Type I Diabetes Mellitus (T1D), Eurospiral has further developed **DiabeGen**, the genetic test for the identification of alleles that either predispose to or protect against T1D.

Eurospiral portfolio of genetic tests related to gastroenterology diseases is completed with **LactoGen**, the easy and non-invasive genetic test with the highest specificity for the identification of lactose intolerant subjects.

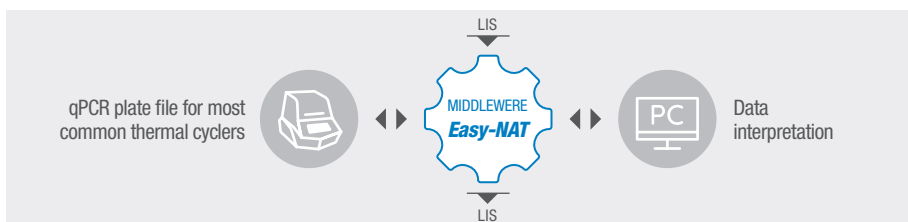
Real time PCR			
Product name	Product description	Ref.	Size
XeliGen XL	Molecular biology kit for the determination of genetic susceptibility to coeliac disease, from human DNA. Liquid reagents. Open platform.	9186	24 tests
XeliGen Lyo	Molecular biology kit for the determination of genetic susceptibility to coeliac disease, from human DNA. Lyophilized reagents. Open platform.	9186L	24 tests
DiabeGen I step	Molecular biology kit for the determination of genetic susceptibility / protection to Type I Diabetes Mellitus (T1D), from human DNA. Liquid reagents. Open platform.	9192	12 tests
DiabeGen II step	High resolution molecular biology kit to be used after DiabeGen I step kit on those subjects potentially at risk of Type I Diabetes Mellitus (T1D), from human DNA. Liquid reagents. Open platform.	9193	12 tests
LactoGen	Molecular biology kit for the identification of specific alleles responsible for the genetic susceptibility to lactose intolerance, from human DNA. Open platform.	9241	32 tests
LactoGen Controls	Optional positive controls for LactoGen kit.	9242	20 tests

DNA extraction kit			
Product name	Product description	Ref.	Size
Eu-Gen Extraction	Kit for manual DNA extraction and purification from eukaryotic cells, bacteria, viruses and biological samples to be used by molecular biology techniques.	9132	24 samples

Software			
Product name	Product description	Ref.	Size
Easy-NAT	Eurospital proprietary software for the preparation of EGT tests in real time PCR and the analysis of the results.	9151	1 software

Easy-NAT

Easy-NAT is the middleware Eurospital designed to facilitate the information workflow from and to the LIS, setting up the real time PCR plate on the thermal cycler and finally analyzing the test results. **Easy-NAT** does more than just receiving patients' data from the LIS and associate them with the requested genetic analysis. **Easy-NAT** also sets up the PCR plate on the thermal cycler and retrieves the real time PCR data at the end of the run. The biggest advantage of using **Easy-NAT** is having a tool that automatically analyses the results and provides a clear report with their interpretation. The report, together with the results, can be finally sent back to the LIS.





EMB EUROSPIRAL
MOLECULAR BIOLOGY
PRODUCT LINE

Molecular Biology

MOLECULAR BIOLOGY FOR QUICK IDENTIFICATION AND PREVENTION OF SEVERAL DISEASES

Molecular diagnostic is a fundamental approach for the prevention, identification and treatment of many diseases. Eurospiral's commitment for the improvement and for the automation of diagnostic processes is renewed every day, through the passionate work of its R&D experts.

Eu-King's STAR is an innovative platform designed by Eurospiral Diagnostic Division to respond to the need for automation in molecular diagnostics for both screening and multi-parameters analysis.

The platform, together with the ***Easy-NAT*** middleware, allows the optimization of laboratory resources and time, as well as grants a safe and traceable data exchange.

Eu-King's STAR

Eu-King's STAR is a platform for the automated and simultaneous extraction of nucleic acids and the setup of PCR amplification plates.

Eu-King's STAR integrates independent extraction and liquid handling modules, ensuring a functional and versatile automation.

High flexibility is granted by the wide range of possible applications, including, more than an unique extraction protocol from primary tube, also the ability to manage different volumes of samples and extracted nucleic acids in the same analytical session.



For more information: www.emb.eurospital.com

Real time PCR

Product name	Product description	Ref.	Size
EuSepScreen Lattanti	Molecular biology test for the fast identification of bacterial strains (all serogroups of <i>Klebsiella pneumoniae</i> , <i>Escherichia coli</i> , <i>Streptococcus agalactiae</i> and <i>Listeria monocytogenes</i>), on DNA extracted from biological specimens normally sterile.	9144	8 tests
EuSepScreen Plus	Molecular biology test for the fast identification of bacterial strains (<i>Neisseria meningitidis</i> , <i>Streptococcus pneumoniae</i> , all <i>Haemophilus influenzae</i> strains (a-f) and <i>Haemophilus influenzae type B</i>), on DNA extracted from biological specimens normally sterile.	9345	8 tests

DNA and RNA extraction

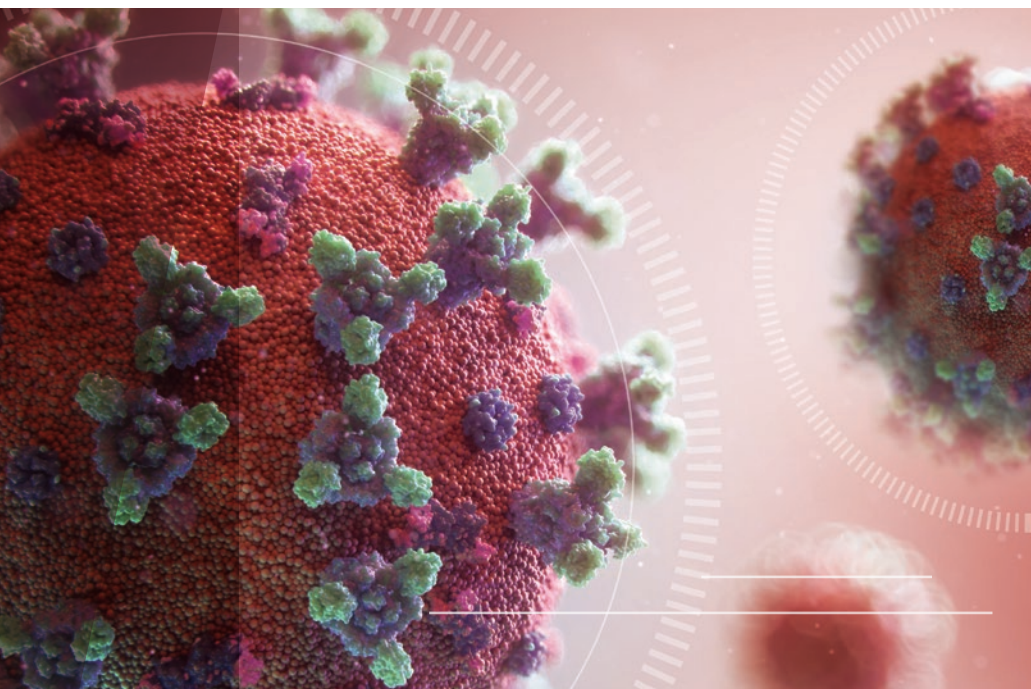
Product name	Product description	Ref.	Size
Eu-Mag Pathogen DNA / RNA Extraction	Pathogen DNA and RNA extraction kit based on magnetic beads technology.	2044	960 tests
Eu-Mag Pathogen DNA / RNA Extraction	Pathogen DNA and RNA extraction kit based on magnetic beads technology.	2045	5000 tests

Software

Product name	Product description	Ref.	Size
Easy-NAT	Middleware for the management of third party molecular diagnostics instruments, data analysis and bidirectional transfer to the LIS.	9151	1 software

Instrument

Product name	Product description	Ref.	Size
Eu-King's STAR	Platform for the automated extraction of nucleic acids and the PCR set-up of amplification plates.	2056	1 instrument



EIL EUROSPIRAL
INFECTIOLOGY
PRODUCT LINE

Infectiology

ACCURATE AND RELIABLE SEROLOGICAL TESTS FOR THE DIAGNOSIS OF INFECTIOUS DISEASES

Eurospiral Infectiology Product Line (EIL) offers a variety of ELISA tests for serological diagnosis of pathogens responsible for respiratory diseases.

Respiratory diseases affect airways and other structures of the lungs. These diseases can be usually caused by air pollution or by first and second hand tobacco smoking. Another cause can be microorganism infections. EIL provides a valid support in the identification of respiratory infections, allowing a prompt, correct and more efficient intervention on the patient.

ELISA

Product name	Product description	Ref.	Size
SARS-CoV-2 RBD IgG	ELISA test for the semi-quantitative determination of IgG class neutralizing antibodies anti the RBD of the S1 subunit of SARS-CoV-2 spike protein, in human venous serum and plasma, as well as in capillary plasma.	9288	96 tests
SARS-CoV-2 IgG	ELISA test for the qualitative determination of IgG antibodies against SARS-CoV-2, in human serum and plasma.	9290	96 tests
SARS-CoV-2 IgM	ELISA test for the qualitative determination of IgM antibodies against SARS-CoV-2, in human serum and plasma.	9291	96 tests
SARS-CoV-2 IgA	ELISA test for the qualitative determination of IgA antibodies against SARS-CoV-2, in human serum and plasma.	9292	96 tests
Cp-Quant IgA	ELISA test for the semi-quantitative determination of IgA antibodies against <i>Chlamydia pneumoniae</i> .	9266	96 tests
Cp-Quant IgG	ELISA test for the semi-quantitative determination of IgG antibodies against <i>Chlamydia pneumoniae</i> .	9267	96 tests
Cp IgG	ELISA test for the qualitative determination of IgG antibodies against <i>Chlamydia pneumoniae</i> .	9250	96 tests
Cp IgA	ELISA test for the qualitative determination of IgA antibodies against <i>Chlamydia pneumoniae</i> .	9251	96 tests
Cp IgM	ELISA test for the qualitative determination of IgM antibodies against <i>Chlamydia pneumoniae</i> .	9252	96 tests
Myp-test IgA	ELISA test for the semi-quantitative determination of IgA antibodies against <i>Mycoplasma pneumoniae</i> .	7915	96 tests
Myp-test IgG	ELISA test for the semi-quantitative determination of IgG antibodies against <i>Mycoplasma pneumoniae</i> .	7916	96 tests
Myp-test IgM	ELISA test for the semi-quantitative determination of IgM antibodies against <i>Mycoplasma pneumoniae</i> .	7917	96 tests
Ct IgG	ELISA test for the qualitative determination of IgG antibodies against <i>Chlamydia trachomatis</i> .	9258	96 tests
Ct IgA	ELISA test for the qualitative determination of IgA antibodies against <i>Chlamydia trachomatis</i> .	9259	96 tests



EAL EUROSPIRAL
AUTOIMMUNITY
PRODUCT LINE

Autoimmunity

THE WINNING MOVE FOR THE DIAGNOSIS OF AUTOIMMUNE DISEASES

Eurospiral Autoimmunity Product Line (EAL) offers a range of first and second level tests as a support for the diagnosis of autoimmune diseases.

Autoimmune diseases are chronic pathologies characterized by inflammatory and immune reactions against self antigens, which can be both systemic and organ-specific.

The search for circulating autoantibodies is essential for the diagnosis of various autoimmune diseases, including rheumatoid arthritis, multiple sclerosis, systemic lupus erythematosus and scleroderma.

ELISA

Product name	Product description	Ref.	Size
<i>Eu-ACA G/M</i>	ELISA test for the quantitative determination of IgG and IgM antibodies against cardiolipin in human serum and plasma samples, intended for the IVD use as an aid in the diagnosis of an increased risk of thrombosis in patients with systemic lupus erythematosus or lupus-like disorders.	7600	96 tests
<i>Eu-ACA A</i>	ELISA test for the quantitative determination of IgA class autoantibodies against cardiolipin in human serum and plasma, intended for IVD use as an aid in the diagnosis of an increased risk of thrombosis in patients with systemic lupus erythematosus or lupus-like disorders.	7601	96 tests
<i>Eu-BGP1 G/M</i>	ELISA test for the quantitative determination of IgG and IgM class autoantibodies against β -2-Glycoprotein I in human serum and plasma, intended for the IVD use as an aid in the diagnosis of an increased risk of thrombosis in patients with systemic lupus erythematosus or lupus-like disorders.	7603	96 tests
<i>Eu-PS S G/M</i>	ELISA test for the quantitative determination of IgG and IgM antibodies against cardiolipin, phosphatidyl serine, phosphatidyl inositol, phosphatidic acid and β -2-glycoprotein I in human serum or plasma, intended for the IVD use as an aid in the diagnosis of an increased risk of thrombosis in patients with systemic lupus erythematosus or lupus-like disorders.	7606	96 tests
<i>Eu-Prothrombin G/M</i>	ELISA test for the quantitative determination of IgG and IgM class autoantibodies against prothrombin in human serum and plasma.	7610	96 tests
<i>Eu-ANA S</i>	ELISA test for the qualitative determination of anti-nuclear antibodies (ANAs) in human serum or plasma, intended for the IVD use as an aid in the diagnosis of certain systemic rheumatic diseases.	7614	96 tests
<i>Eu-8 ENA S</i>	ELISA test for the qualitative determination of anti-extractable nuclear antigens (ENAs) in human serum or plasma, intended for the IVD use as an aid in the diagnosis of certain systemic rheumatic diseases.	7615	96 tests
<i>Eu-8 ENA Pr</i>	ELISA test for the qualitative determination of anti-extractable nuclear antigens (ENAs) in human serum or plasma, intended for the IVD use as an aid in the diagnosis of certain systemic rheumatic diseases.	7618	96 tests
<i>Eu-CCP</i>	ELISA test for the quantitative determination of IgG class antibodies against cyclic citrullinated peptides (CCP) in human serum or plasma, intended for the IVD use as an aid in the diagnosis of rheumatoid arthritis.	7631	96 tests
<i>Eu-dsDNA G</i>	ELISA test for the quantitative determination of IgG class autoantibodies against double-stranded DNA in human serum or plasma, intended for the IVD use as an aid in the diagnosis of systemic lupus erythematosus.	7639	96 tests
<i>Eu-PR3 +</i>	ELISA test for the quantitative determination of IgG autoantibodies against PR3 in human serum or plasma.	7646	96 tests
<i>Eu-MPO</i>	ELISA test for the quantitative determination of IgG antibodies against myeloperoxidase (MPO) in human serum or plasma.	7647	96 tests
<i>Eu-AMA M2</i>	ELISA test for the quantitative determination of IgG class autoantibodies against mitochondrial M2 subtype antigen in human serum or plasma, intended for the IVD use as an aid in the diagnosis of primary biliary cirrhosis.	7651	96 tests
<i>Eu-Insulin</i>	ELISA test for the quantitative determination of IgG antibodies against bovine, porcine and recombinant human insulin in human serum or plasma.	7652	96 tests

Immunoblot			
Product name	Product description	Ref.	Size
<i>Eu-Liver Blot</i>	Dot Blot for the qualitative detection of autoantibodies anti AMA M2, Sp100, gp210, SLA/LP, LKM-1, LC1, F-Actin, Actinin and Tropomyosin in human serum or plasma, intended for the IVD use as an aid in the diagnosis of autoimmune hepatitis (AIH).	7673	16 tests

IFA			
Product name	Product description	Ref.	Size
<i>ANA Hep2</i>	Indirect immunofluorescence test for the detection of class G anti-nuclear antigens on epithelial cells from human laryngeal carcinoma (Hep2).	6948	72 tests
<i>ANA, AMA, APCA, ASMA ed LKM (Triple Tissue)</i>	Indirect immunofluorescence test for the detection of IgG autoantibodies against anti-nucleus (ANA), anti-mitochondrial (AMA), anti-smooth muscle (ASMA), anti-gastric parietal cells (APCA) and anti-microsome (LKM) on mouse liver/kidney/stomach tissues in human serum.	6949	72 tests
<i>nDNA</i>	Indirect immunofluorescence test for the detection of IgG autoantibodies against anti native DNA in human serum.	6950	70 tests
<i>Antiendomysium IgA (4 wells)</i>	Detection of IgA anti-endomysial antibodies in serum on sections of the lower third of monkey esophagus. The gold standard confirmation test for suspected coeliac patients. 4 test wells per slide.	8734	96 tests
<i>Antiendomysium IgA (8 wells)</i>	Detection of IgA anti-endomysial antibodies in serum on sections of the lower third of monkey esophagus. The gold standard confirmation test for suspected coeliac patients. 8 test wells per slide.	8738	96 tests
<i>Antiendomysium IgG</i>	Detection of IgG anti-endomysial antibodies in serum on sections of the lower third of monkey esophagus. The gold standard confirmation test for suspected coeliac patients.	8721	48 tests
<i>Antiendomysium Biopsy</i>	Detection of IgA anti-endomysial antibodies from intestinal biopsy culture on lower third sections of monkey esophagus. The gold standard confirmation test for suspected coeliac patients.	8726	20 tests



Additional information and scientific references available on:
www.eurospital.com

E U R O S P I T A L
D I A G N O S T I C

Eurospital SpA

Via Flavia, 122, 34147 Trieste, Italy
tel. +39 040 89971 - fax +39 040 280944
www.eurospital.com - info@eurospital.it



WDC001 Rev.2 22.09.08

The Eurospital quality system is certified according to the ISO 9001 and ISO 13485 standards

This document is not legally binding. Eurospital reserves the right to change specifications without notice.

Printed on FSC certified paper